



Overhead High Voltage Checklist

Christopher G. Hill

804.916.6591

Chill@durettebradshaw.com

Applicable to:

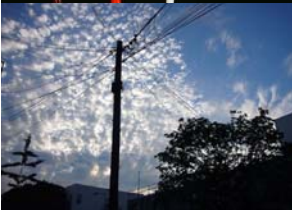
- ❑ Persons operating covered equipment that could come within **10 feet** (3.1 meters) of overhead high voltage lines in excess of 600 volts

Warning Signs:

- ❑ Appearance
 - Maximum of 8 floors between erection floor and uppermost permanent floor
 - Weather-resistant
 - Not less than five inches by seven inches
 - Yellow background with black lettering
 - Reads "WARNING – UNLAWFUL TO OPERATE THIS EQUIPMENT WITHIN 10 FEET OF OVERHEAD HIGH VOLTAGE LINES"
- ❑ Placement
 - Within equipment
 - Readily visible and legible when operator at controls
 - Outside of equipment
 - Readily visible
 - Legible at 12 feet to other workers

Prohibited Activities:

- ❑ Work that requires any person or equipment to be placed within **10 feet** (3.1 meters) of any line



Overhead High Voltage Checklist

Christopher G. Hill

804.916.6591

Chill@durettebradshaw.com

Overhead High Voltage checklist continued from page 1...

If You Need to Work Closer than 10 Feet to Lines:

- Procedure
 - Promptly notify owner or operator of high voltage line on working day
 - **Note***: See Notification Requirements below
 - Negotiate arrangements
 - Consider owner's or operator's service needs
 - Consider protecting the public from danger of lines
 - Line owner or operator has *five working days* from date of request to initiate agreed upon safety arrangements
- Arrangements May Include
 - Placement of temporary mechanical barriers between equipment and lines
 - Temporary de-energization and grounding
 - Temporary relocation or raising of the lines
 - Other such measures owner or operator of the lines finds appropriate

Notification Requirements:

- Name of individual serving notice
- Location or address of tract or parcel of land
- Name, address, and work day telephone number of person responsible
- Field telephone number at site, if available
- Type and extent of proposed work
- Name for whom proposed work is being performed
- Time and date of notice
- Date work is scheduled to commence and date work is to be completed

** If delay in starting work is encountered after arrangements made, new notice required.*

Caution: Violators can be fined and possibly required to indemnify power line owners against all claims and costs arising from work violating the law

Overhead High Voltage Checklist

Christopher G. Hill

804.916.6591

Chill@durettebradshaw.com

Overhead High Voltage checklist continued from page 2...

General Requirements - Clearances in Power Transmission and Distribution:

- Approved insulating handle required to approach or take any conductive object to exposed energized parts *if closer than* minimum working distances (see table below)
- Exceptions:
 - Employee insulated or guarded from energized part
 - Energized part insulated or guarded from employee or object at different potential
 - Employee isolated, insulated, or guarded from any other exposed conductive object(s)

ALTERNATING CURRENT - MINIMUM DISTANCES

Voltage range (phase to phase) (kilovolt)	Minimum working and clear hot clear hot stick distance
2.1 to 15	2 ft. 0 in.
15.1 to 35	2 ft. 4 in.
35.1 to 46	2 ft. 6 in.
46.1 to 72.5	3 ft. 0 in.
72.6 to 121	3 ft. 4 in.
138 to 145	3 ft. 6 in.
161 to 169	3 ft. 8 in.
230 to 242	5 ft. 0 in.
345 to 362	(1)7 ft. 0 in.
500 to 552	(1)11 ft. 0 in.
700 to 765	(1)15 ft. 0 in.

Footnote(1) NOTE: For 345-362 kv., 500-552 kv., and 700-765 kv., minimum clear hot stick distance may be reduced provided that such distances are not less than the shortest distance between the energized part and the grounded surface

